

# Grace Christian Academy

New High School & Field House

CONCEPT SCHEMATIC OCTOBER 23, 2020



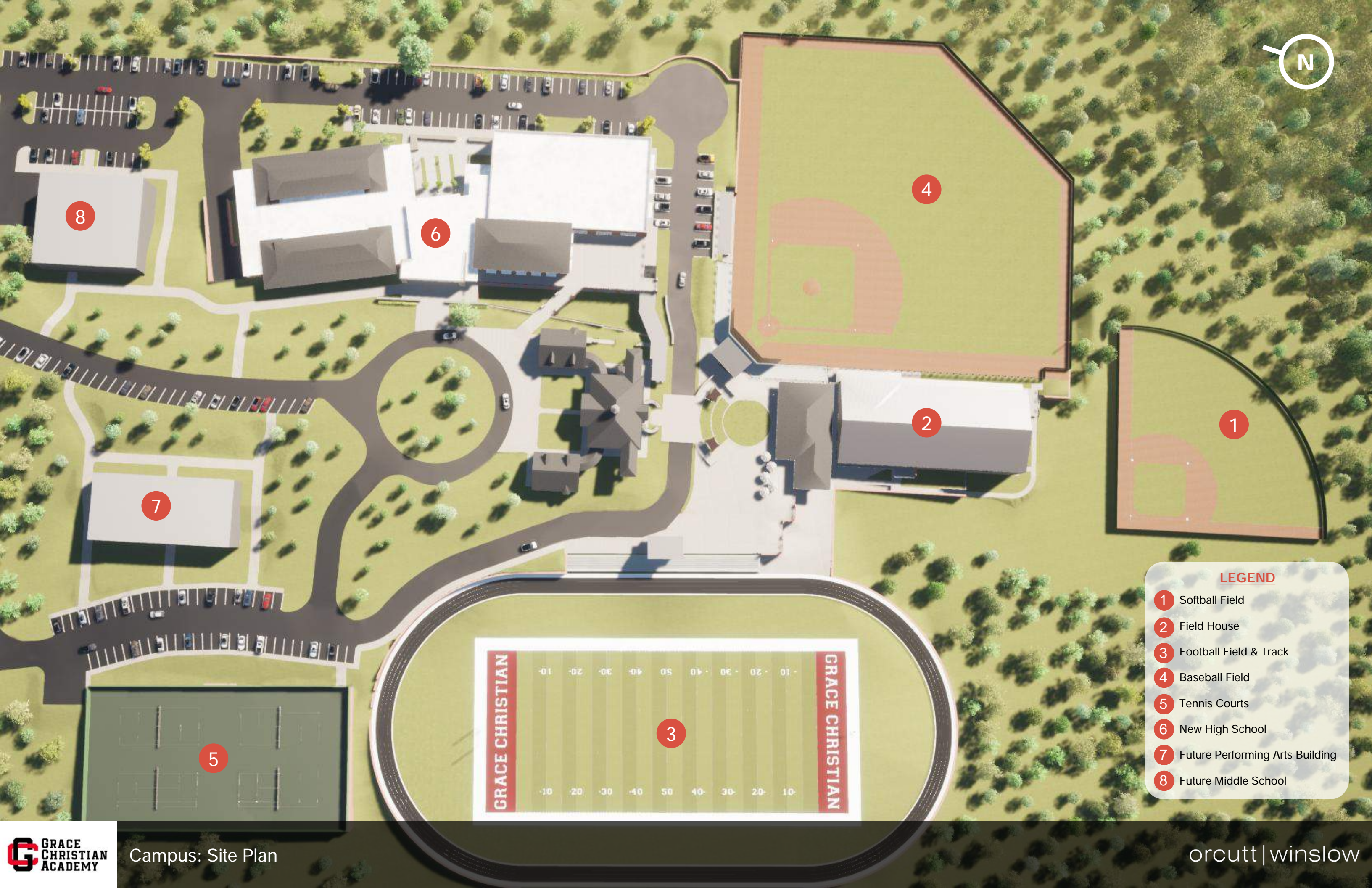
3279 Southall Rd,  
Franklin, TN 37064

orcutt | winslow

5016 Centennial Blvd  
Third Floor  
Nashville, TN 37209







**LEGEND**

- 1 Softball Field
- 2 Field House
- 3 Football Field & Track
- 4 Baseball Field
- 5 Tennis Courts
- 6 New High School
- 7 Future Performing Arts Building
- 8 Future Middle School

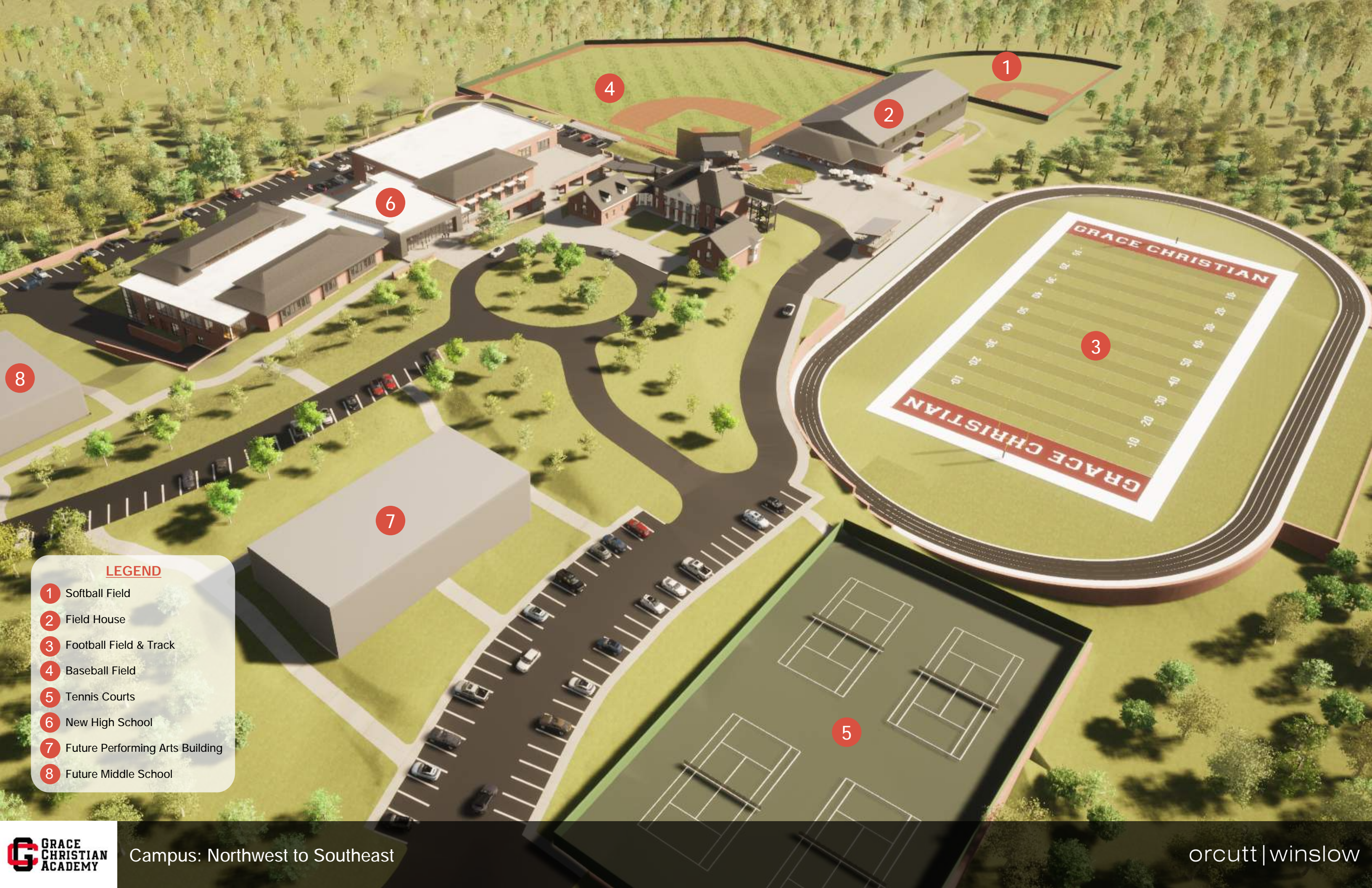




**LEGEND**

- 1 Softball Field
- 2 Field House
- 3 Football Field & Track
- 4 Baseball Field
- 5 Tennis Courts
- 6 New High School
- 7 Future Performing Arts Building
- 8 Future Middle School





**LEGEND**

- 1 Softball Field
- 2 Field House
- 3 Football Field & Track
- 4 Baseball Field
- 5 Tennis Courts
- 6 New High School
- 7 Future Performing Arts Building
- 8 Future Middle School

















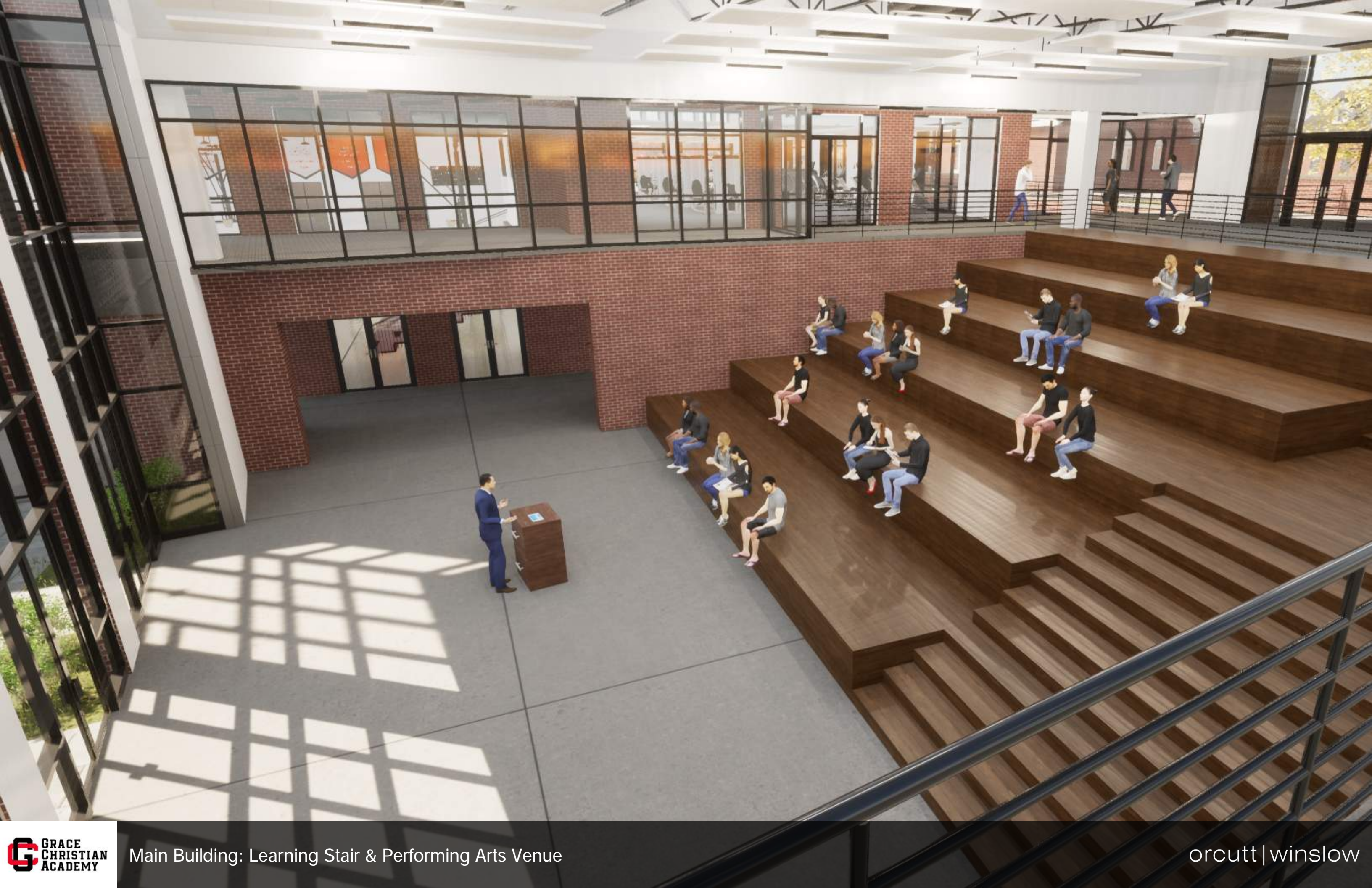
























GRACE  
CHRISTIAN  
ACADEMY  
CHAMPIONS  
2010

GRACE  
CHRISTIAN  
ACADEMY  
CHAMPIONS  
2013

GRACE  
CHRISTIAN  
ACADEMY  
CHAMPIONS  
2004

GRACE  
CHRISTIAN  
ACADEMY  
CHAMPIONS  
2000

GRACE  
CHRISTIAN  
ACADEMY  
CHAMPIONS  
1998

GRACE  
CHRISTIAN  
ACADEMY  
CHAMPIONS  
1994

GRACE  
CHRISTIAN  
ACADEMY  
CHAMPIONS  
1985

GRACE  
CHRISTIAN  
ACADEMY  
CHAMPIONS  
1984







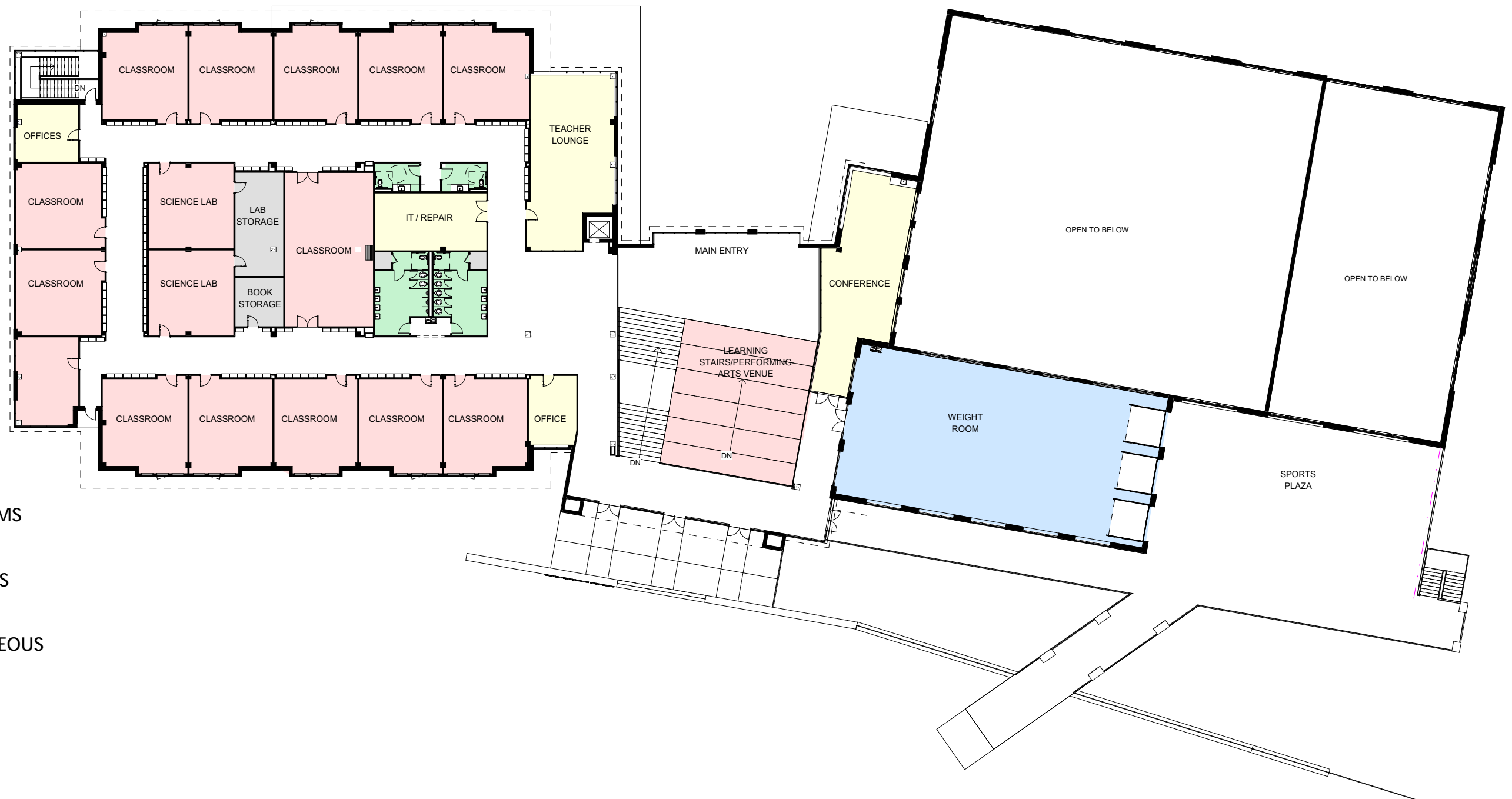


First Floor Plan

1/32" = 1' - 0"







- CLASSROOMS
- STAFF
- RESTROOMS
- ATHLETICS
- MISCELLANEOUS

Second Floor Plan

1/32" = 1' - 0"







NORTH ELEVATION

1/16" = 1' - 0"



SOUTH ELEVATION

1/16" = 1' - 0"







EAST ELEVATION PART A

1/16" = 1' - 0"



WEST ELEVATION PART A

1/16" = 1' - 0"







EAST ELEVATION PART B

1/16" = 1' - 0"



WEST ELEVATION PART B

1/16" = 1' - 0"









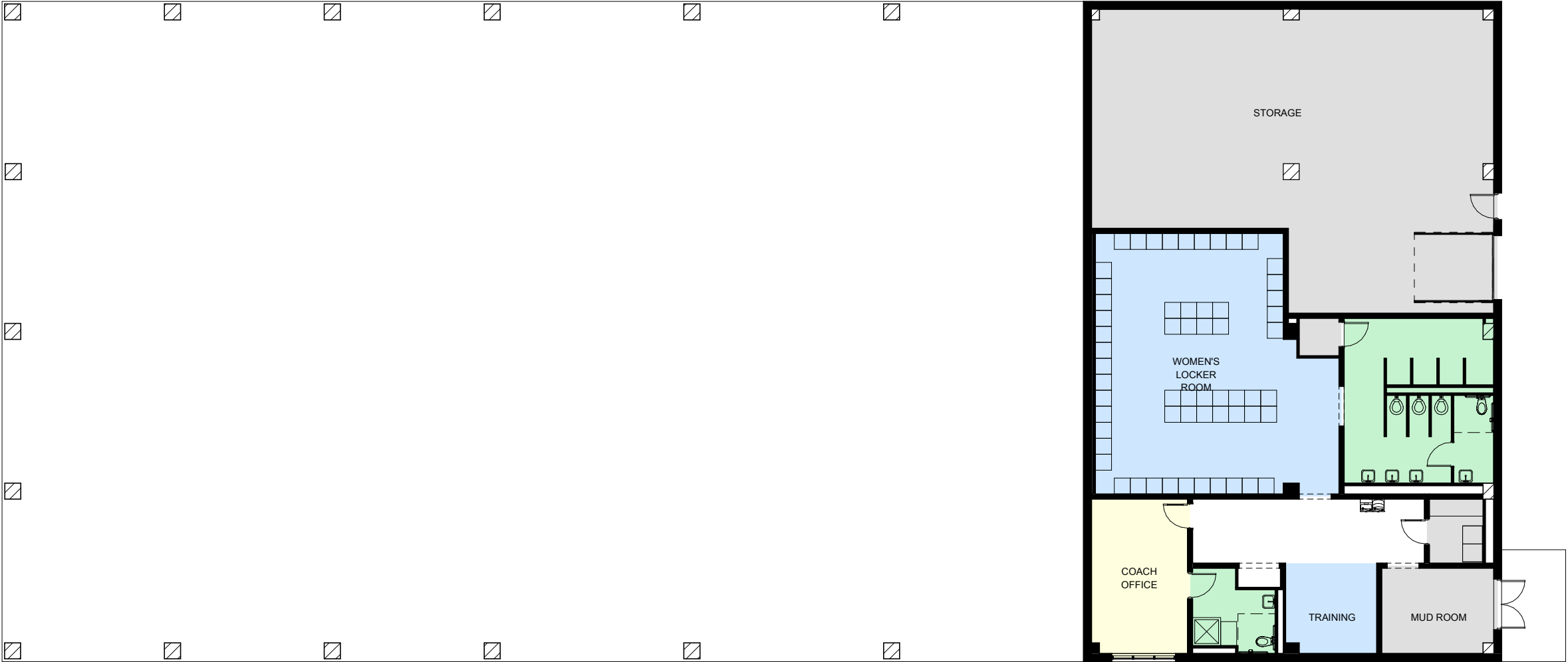








- STAFF
- RESTROOMS
- ATHLETICS
- MISCELLANEOUS

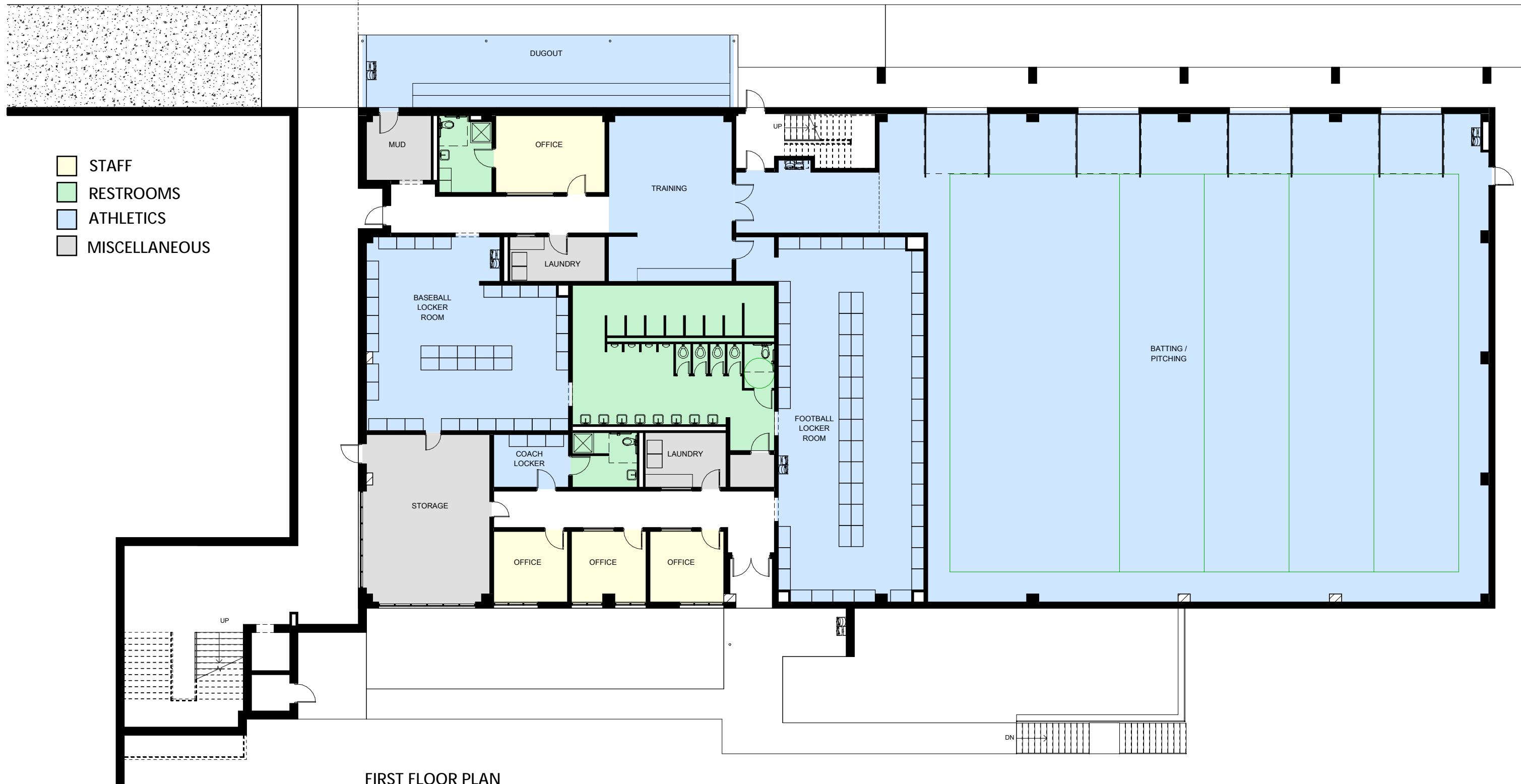


BASEMENT FLOOR PLAN

1/16" = 1' - 0"





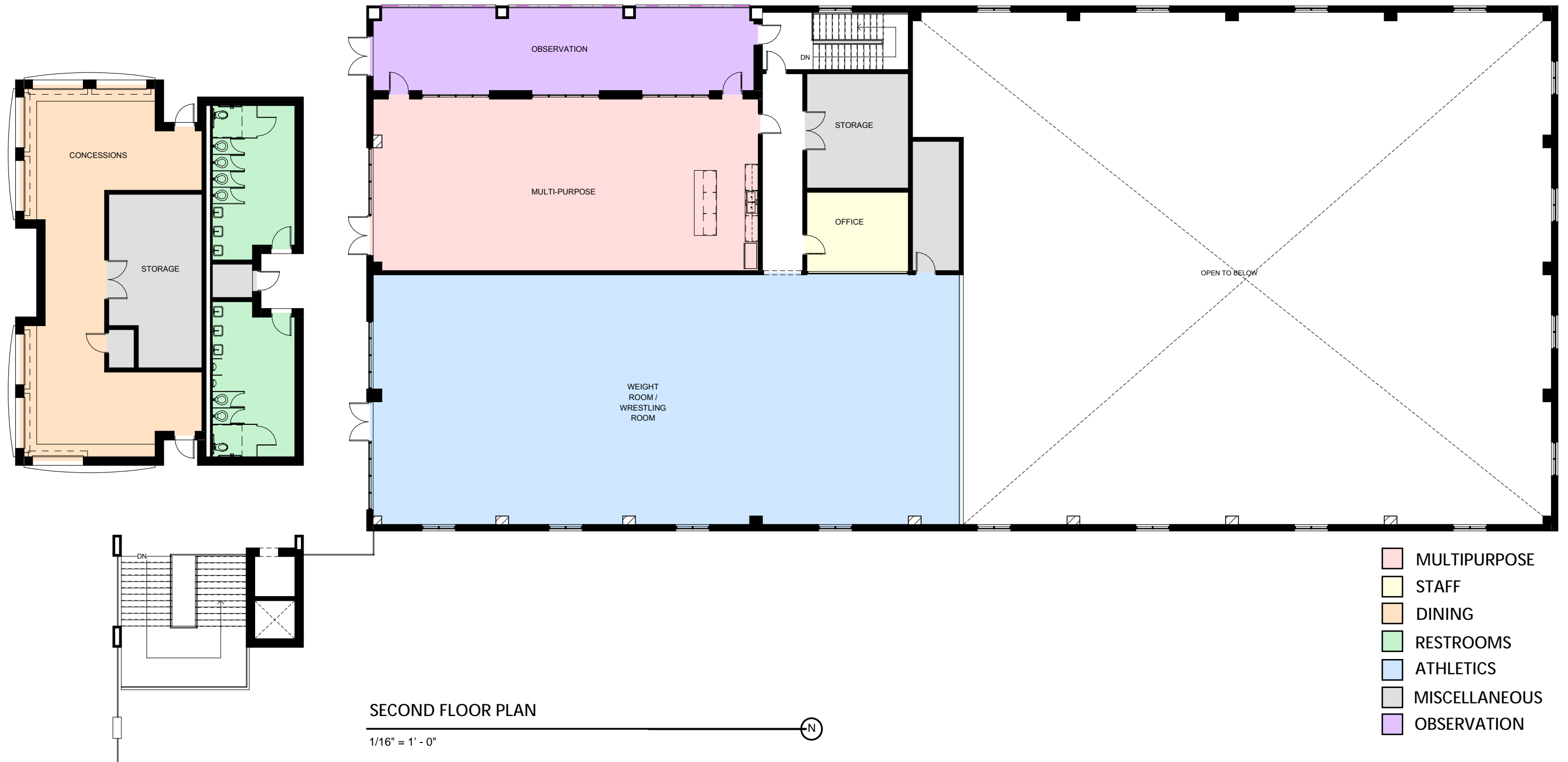


FIRST FLOOR PLAN

1/16" = 1' - 0"





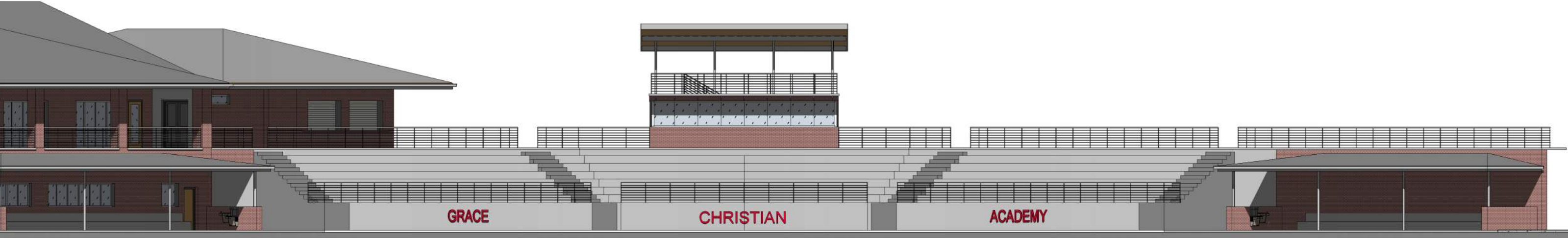






NORTH ELEVATION

1/16" = 1' - 0"



NORTHWEST ELEVATION

1/16" = 1' - 0"







SOUTH ELEVATION

1/16" = 1' - 0"



WEST ELEVATION

1/16" = 1' - 0"





